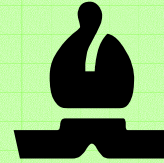


# Educational Technologies, and the Orange Peck Place PTA

Present the



## 2007 Greater New Haven Winter Open

**10 Grand Prix Points; \$1,000 Prize Fund b/40!**

**When:** Saturday Feb 2, Registration 8:30 – 9:30am.

**Where:** Peck Place Elementary School, Orange, CT. (Driving Directions below.)

**What:** USCF-Rated Event \$1000 Prize Fund b/40

**Entry fee:** \$40 postmarked by 1/28, otherwise \$70 at site

**5 Sections:** Open, 4 Round Swiss, G60, Rds 1 & 2 Accelerated Pairings  
U1600, 4 Round Swiss, G45, Rds 1 & 2 Accelerated Pairings

U1200, U1000, U800/unrated 5 Round Swiss, G30

**\$\$ Prizes:** Open \$300, \$200, \$100, \$100, 6 x \$50 based on 40 entries

**Trophies:** Top 5 U1600, U1200, U1000, U800/Unrated  
Top 3 Scholastic Teams!!

**On Site Registration:** 8:30 – 9:30am

**Round 1 Open & U1600 Sections start promptly at 9am**

**All other sections Round 1 starts promptly 10am**

**Refreshments, Lunch, and Chess Equipment on Sale.**

Please arrive early for on-site registration and check-in. No registrations accepted after 9:30am. Round 1 starts promptly at 10am. Any questions contact Jim Celone 203-799-9997 [icel@aol.com](mailto:icel@aol.com), For more info, check [www.edutechchess.com](http://www.edutechchess.com) or [www.ctchess.com](http://www.ctchess.com)



Round Times for Open & U1600 Section: 9am, 11:30, 2pm, 4pm

Rounds for U1200, U1000, & U800/Unrated Sections: 10am, then asap

Players should bring their own clocks and sets if they have them.

Time delay clocks will have a five minute deduction for each player before the round commences.

**Directions:**

From Bridgeport take I95E to Exit 41. Take left at light onto Marsh Hill Rd. Go straight through several lights to first stop sign. Take left at this stop sign onto Old Tavern Rd. Go through one light to next stop sign. Take right at stop sign onto Peck Lane. Peck Place School is at the end on left.

From New Haven take I95S to Exit 41. Take right at light onto Marsh Hill Rd. Go straight through several lights to first stop sign. Take left at this stop sign onto Old Tavern Rd. Go through one light to next stop sign. Take right at stop sign onto Peck Lane. Peck Place School is at the end on left.

**CSCA MEMBERSHIP REQUIRED:** Show current CSCA card or \$5 payable at tournament. If out of state resident and member of other state association, bring unexpired card as proof of membership.

**U.S.C.F. MEMBERSHIP REQUIRED:** Adult \$49 = 12 issues of Chess Life; Young Adult: 24 and Under, \$25, 12 issues of Chess Life; Youth: 15 and under, \$19, 6 issues of Chess Life; Scholastic: 12 and under, \$17, 6 issues of Chess Life For Kids **Please make separate check payable to Educational Technologies**

**Play JAVA CHESS!**

Check for School Programs and Tournament Results

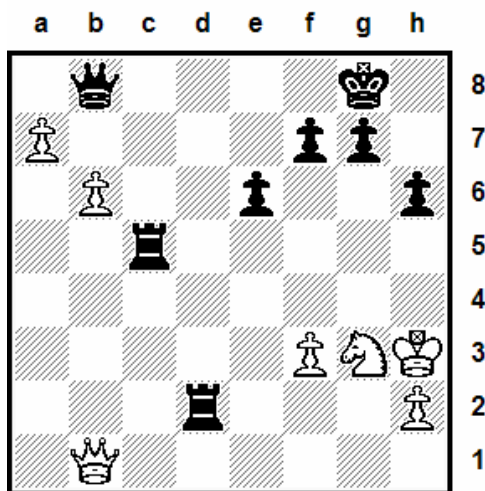
at

[www.Edutechchess.com](http://www.Edutechchess.com)

or

[www.CTChess.com](http://www.CTChess.com)

If your school needs a chess program, contact us!



Ibragimov, I. vs. Wheeler, H. 2007 GNHFO  
Black to move and win. Can you find it?

**March 8 & 9  
2008 CT Championships  
at  
Yale University!**

**\$3000 Prize Fund!  
Yale Chess Sets to first 300!  
Don't miss this event!**

Details at  
[www.Edutechchess.com](http://www.Edutechchess.com)  
or  
[www.CTChess.com](http://www.CTChess.com)

**Please fill out entry form below and return by snail mail with check(s). Must be postmarked by 1/28 !**

**USCF Membership must be current! Please include USCF ID# and Expiration Date on Entry Form!**

Make \$40 checks payable to: Educational Technologies, 452 Peck Lane, Orange, CT. 06477 **Please print clearly!**

Name \_\_\_\_\_

USCF ID# \_\_\_\_\_ Exp. Date \_\_\_\_\_

Address \_\_\_\_\_

Birth Date \_\_\_\_/\_\_\_\_/\_\_\_\_

City \_\_\_\_\_ State \_\_\_\_ Zip \_\_\_\_\_

Check One Box Only:

Phone \_\_\_\_\_

**Open**                       **U1600**

Email \_\_\_\_\_

**U1200**                       **U1000** (children only)

School \_\_\_\_\_ Rating \_\_\_\_\_

**U800/Unrated** (children only)

I hereby authorize any chess photos of my child may be used for newspaper or web-based articles about the chess tournament.

Parent/Guardian \_\_\_\_\_